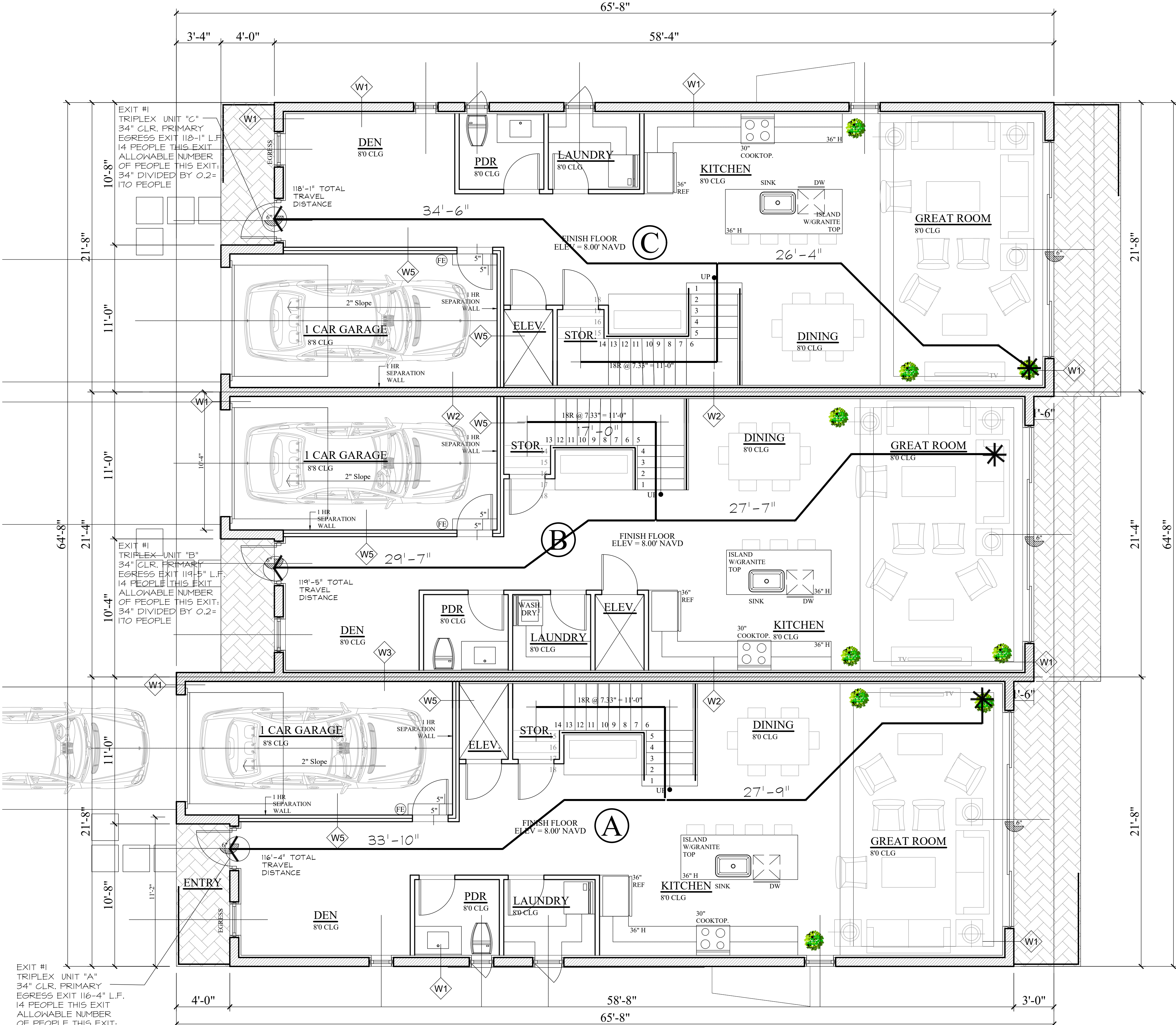


(CONFIDENTIAL)

3- PLEX	
TOTAL FOOT PRINT	3,883 S.F.
TOTAL UNDER ROOF	4,202 S.F.
BUILDING HEIGHT	31'-4" (MAX. 35'-0")

1st. FLOOR LIFE SAFETY PLAN

SCALE: 1/4" = 1'-0"



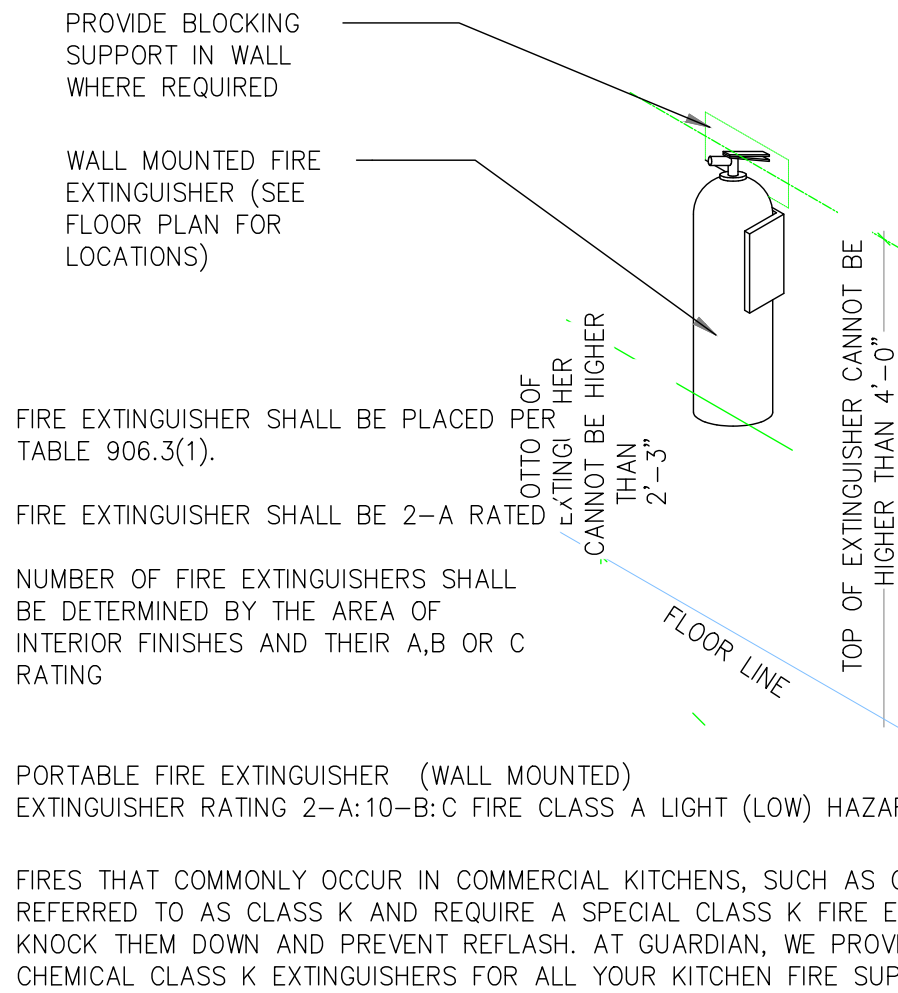
GROUP OCCUPANT LOAD:

UNIT	
A	RESIDENTIAL GROUP R-2 M-H DENSITY MAX. FLOOR AREA / OCCUP. 2023 F.B.C. 8th EDIT. TABLE 1004.5 2,781 S.F./200 GROSS /PERSON = 14 PEOPLE
B	RESIDENTIAL GROUP R-2 M-H DENSITY MAX. FLOOR AREA / OCCUP. 2023 F.B.C. 8th EDIT. TABLE 1004.5 2,710 S.F./200 GROSS /PERSON = 14 PEOPLE
C	RESIDENTIAL GROUP R-2 M-H DENSITY MAX. FLOOR AREA / OCCUP. 2023 F.B.C. 8th EDIT. TABLE 1004.5 2,766 S.F./200 GROSS /PERSON = 14 PEOPLE
TOTAL OCCUPANT LOAD = 42 PEOPLE	

TABLE 1006.2.1 SPACES WITH ONE EXIT OR EXIT ACCESS DOORWAY
OCCUPANCY: R2
MAXIMUM OCCUPANT LOAD OF SPACE 42
MAXIMUM COMMON PATH OF EGRESS TRAVEL DISTANCE (75 feet)
With Sprinkler System 125'
WIDTH OF THE PATH:
MIN. REQ'D = 32" PROVIDED + 34"

CODE INFORMATION:

CITY OF POMPANO BEACH BUILDING & FIRE DEPARTMENTS
THESE PLANS HAVE BEEN REVIEWED USING
FLORIDA FIRE PREVENTION CODE (FFPC) 7TH
EDITION FFPC NFPA 1-2018 AND NFPA 101-2018
ADOPTED ENFORCED CODES:
FBC = 2023 FLORIDA BUILDING CODE 8TH EDITION
FBC-R = 2023 FLORIDA BUILDING CODE, RESIDENTIAL, 8TH EDITION
FBC-EX = 2023 FLORIDA BUILDING CODE, EXISTING BUILDING, 8TH EDITION
FBC-EC = 2023 FLORIDA BUILDING CODE, ENERGY CONSERVATION, 8TH EDITION
FBC-A = 2023 FLORIDA BUILDING CODE, ACCESSIBILITY, 8TH EDITION
FBC-M = 2023 FLORIDA BUILDING CODE, MECHANICAL, 8TH EDITION
FBC-P = 2023 FLORIDA BUILDING CODE, PLUMBING, 8TH EDITION
FBC-FG = 2023 FLORIDA BUILDING CODE, FUEL GAS, 8TH EDITION
NEC = NATIONAL ELECTRICAL CODE, 2020 EDITION
FFPC = FLORIDA FIRE PREVENTION CODE 8TH EDITION
NFIRP / FEMA REGULATIONS = CURRENT EDITION
POMPANO BEACH, FL. CODE OF ORDINANCES
BUILDING DATA:
UNIT 'A' GROSS FLOOR AREA 2,781 SQFT
UNIT 'B' GROSS FLOOR AREA 2,710 SQFT
UNIT 'C' GROSS FLOOR AREA 2,766 SQFT
TOTAL GROSS AREA 8,311 SQFT
BUILDING CLASSIFICATION
OCCUPANCY: RESIDENTIAL (R)
OCCUPANCY GROUP R-2 TRIFLEX
THREE STORIES, 31'-4" HT.
CONSTRUCTION TYPE V-B
REQUIRED WIDTH OF PATH
MIN. 32" REQUIRED
REQUIRED FIRE PROTECTION
FIRE SEPARATION WALL: 1 HR.
STRUCTURAL FRAME: 1 HR.
BEARING WALLS EXTERIOR: 1 HR.
BEAMS AND JOISTS: 0 HR.
BEARING WALLS INTERIOR: 0 HR.
NON BEARING WALLS AND PARTITIONS INTERIOR: 0 HR.
ROOF CONSTRUCTION, INCLUDING SUPPORTING
EXTERIOR BEARING WALL: R10 AND 420 YB = 0 HR.



FIRE EXTINGUISHER DTL.
N.T.S.

WALL + PARTITION SCHEDULE	
W1	ONE LAYER OF 1/2" GYPSUM BD. ON 1X2 FT. WOOD FURRING @ 16" O.C. W/ R41 INSULATION ON INTERIOR AND 5/8" STUCCO ON EXTERIOR OF 8" CONCRETE BLOCK PER UL ASSEMBLIES U302S
W2	ONE LAYER OF 1/2" GYPSUM BD. ON 1X2 FT. WOOD FURRING @ 16" O.C. W/ R41 INSULATION ON CONC. BLOCK SEE ADJACENT UNIT FOR FINISH ON OTHER SIDE-2HR TENANT SEP. WALL PER UL ASSEMBLIES U302S
W3	ONE LAYER OF 1/2" GYPSUM BD. ON 1X2 FT. WOOD FURRING @ 16" O.C. W/ R41 INSULATION ON CONC. BLOCK SEE ADJACENT UNIT FOR FINISH ON OTHER SIDE-2HR TENANT SEP. WALL PER UL ASSEMBLIES U302S
W4	7/8" STUCCO ON 19/32" CDX FLYWD. SHEATH ON EXTERIOR & 1/2" GYPSUM BOARD ON INTERIOR OF 2x8 WOOD STUDS @ 16" O.C. W/ R-11 BATT INSULATION
W5	ONE LAYER OF 5/8" TYPE 'X' GYPSUM BD. ON BOTH SIDES OF 2x6 STUDS @ 16" O.C. W/ R-11 BATT. INSUL. AT GARAGE ONLY? 1 HR GARAGE SEPARATION PER UL ASSEMBLY * L1 305 SEE SHEET A-15